



Southern Lakes
ENGLISH COLLEGE

2023



QUEENSTOWN • INVERCARGILL

STUDY ENGLISH IN THE SOUTH ISLAND OF NEW ZEALAND

QUEENS

TOWN

INVER

CARGILL



Contents

What makes SLEC special?

1

Interesting New Zealand facts

2

Queenstown campus

3

Queenstown Info

4

Invercargill campus

5

Invercargill Info

6

General English

7

Academic English

8

Stay with us!

9

Pastoral Care

10

How to apply

11

What our students are saying

12

WHAT MAKES SLEC SPECIAL?

SLEC: Always Striving for Excellence.

Southern Lakes English College is a modern English Language school, recognised as a Category 1 school by the New Zealand government's official qualifying authority (NZQA). It is also a founding member of English New Zealand.

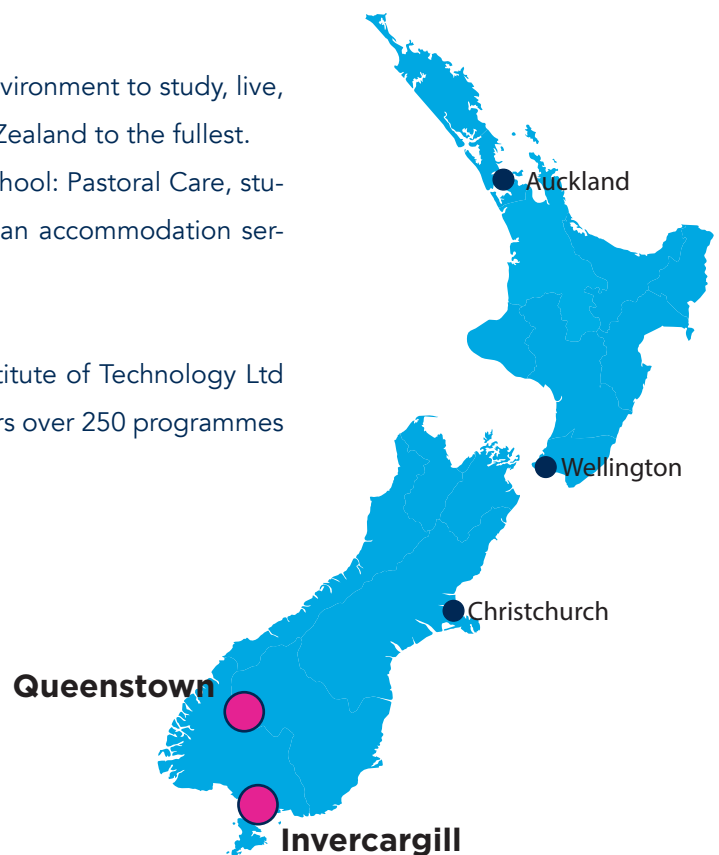
Founded in 1993 SLEC is located in the heart of Queenstown, only a one minute walk from Lake Wakatipu, and close to local shops, cafes, restaurants, pubs, and tourist attractions, including the iconic "Remarkables" Mountains, which were a film location for "Lord of the Rings". SLEC's balcony offers one of the most beautiful views of the city!

In 2018, SLEC opened its second campus in the most southern city of New Zealand, Invercargill, the "city of water and lights", a welcoming and friendly city.

At both campuses, the students will have a unique environment to study, live, work, have fun in and experience the beauty of New Zealand to the fullest.

SLEC offers students a range of facilities within the school: Pastoral Care, student support, visa renewal, extracurricular activities, an accommodation service, and a complete infrastructure!

In addition, SLEC is fully owned by the Southern Institute of Technology Ltd (SIT), a New Zealand Government Institution that offers over 250 programmes and qualifications across a wide range of subjects.



INTERESTING NEW ZEALAND FACTS

A brief history about New Zealand...

New Zealand's history began with the Maoris, who were the first people to arrive in the country between 1200 - 1300AD. They are believed to have come from Polynesia while exploring the Pacific Ocean.

Years later, Abel Tasman, a Dutchman, arrived in the country in 1642 and his attempts to colonise it were unsuccessful. However, he mapped it out and named it New Zealand.

England colonised New Zealand after Captain James Cook arrived in 1769. In 1840, New Zealand's first governor, William Hobson, signed the treaty, the Treaty of Waitangi (Te Tiriti o Waitangi), between the English people and the Maoris, in which it stated that the country should be preserved with its natural beauty, as it is nowadays.

Ref. Immigration New Zealand



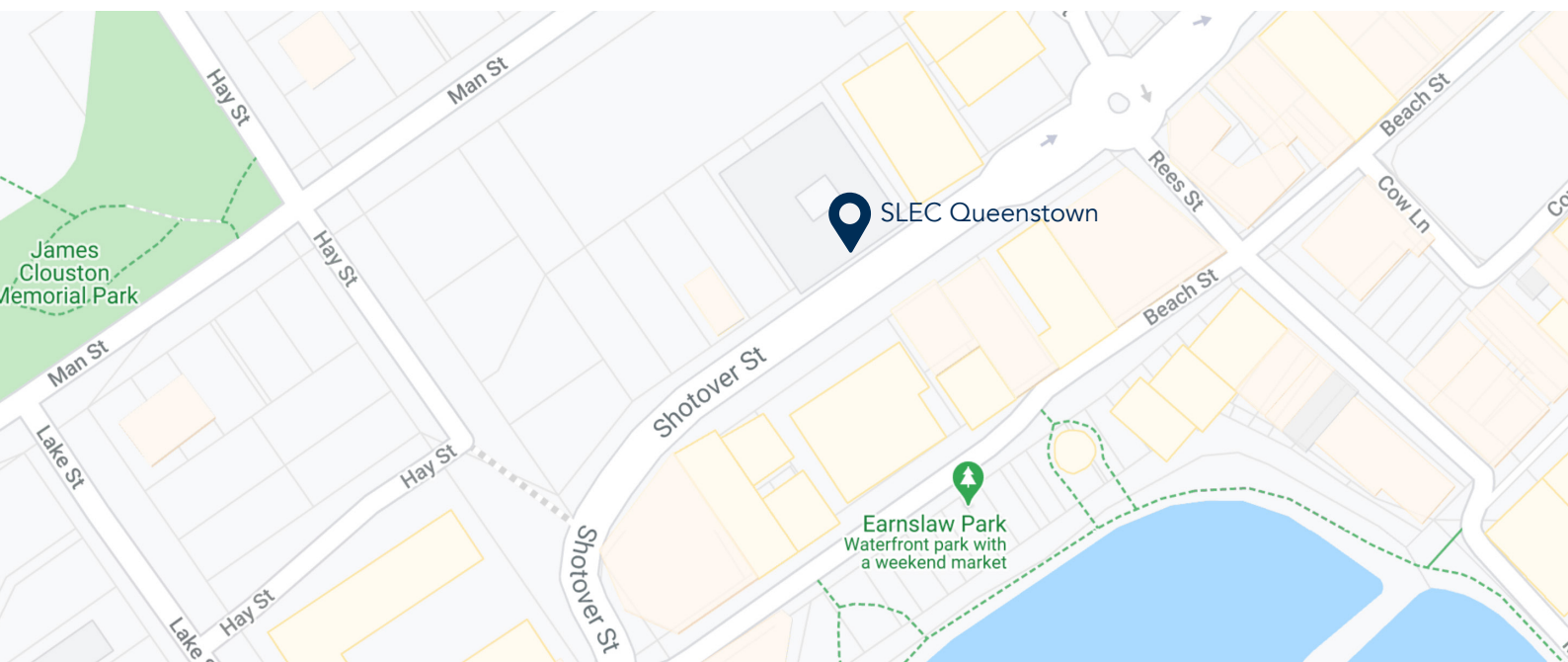
New Zealand Facts

- The last piece of land on Earth to be colonised
- The least corrupt country in the world (2019 Corruption Perception Index)
- Second most peaceful country (2020 Global Peace Index)
- A similar size to the UK and Japan but with a population of only 4.6 million people approximately.
- Home of the most famous rugby team in the world, The All Blacks
- Sheep Population: 26.7 million, which means approximately five sheep per human being
- Home of Pavlova: the most famous dessert in New Zealand
- "The Haka" is a typical dance of the Maori people, which is usually used to demonstrate passion and intimidation, it is part of the New Zealand culture, and is nowadays performed at "All Blacks" games
- The kiwi and silver fern are the unofficial symbols of New Zealand.

QUEENSTOWN CAMPUS

SLEC is located right in the centre of Queenstown, 57 Shotover Street, and only a short walk from Lake Wakatipu. It is within easy reach of a plethora of restaurants, coffee shops, bars, the weekly market, Skyline and many other attractions.

- 100+ students
- 11 classrooms
- Social lounge area
- Table tennis
- Great view from our balcony
- Weekly activities
- Kitchenette
- Average of 12 students per class
- Job Club
- Wide mix of nationalities (students from more than 30 countries)
- Minimum age of 18 years old for regular courses
- Minimum age of 12 years old for seasonal groups
- Cambridge and TOEIC Test Center
- English Only Zone
- No more than 17 students per class



QUEENSTOWN INFO

From the moment you land in Queenstown, you will fall in love with the mountains, atmosphere and the natural beauty of this resort town. It will be one of the most spectacular flights you will ever experience. Queenstown is New Zealand's number one tourist destination and the adventure capital of the world. Surrounded by untouched vistas, the city provides you with more than 50 different kinds of sports and outdoor activities, as well as having the most famous ski resort in the country: Coronet Peak, where you can also ski at night, and The Remarkables (location of "Lord of the Rings" trilogy). Queenstown and the nearby Gibbston Valley are home to over 75 wineries.

- Queenstown Lakes District population: 39,500
- Tourists per year in Queenstown: more than 3 million approximately
- Cosmopolitan, friendly and extremely safe city
- Average temperature: 3°C – 30°C
- Lively nightlife with bars and pubs
- Home of bungy jumping
- Lake Wakatipu: the longest lake in New Zealand



Skyline Luge



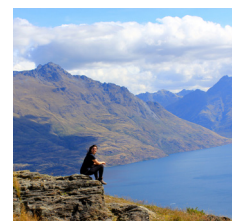
Remarkables Mountain



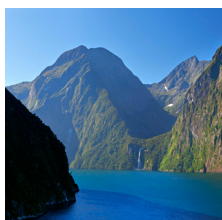
Coronet Peak



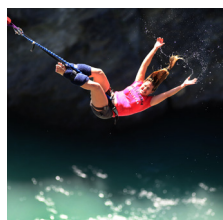
Shotover Jet



Queenstown Hill



Milford Sound



Bungee Jumping



Clarke Glacier



Mountain Biking

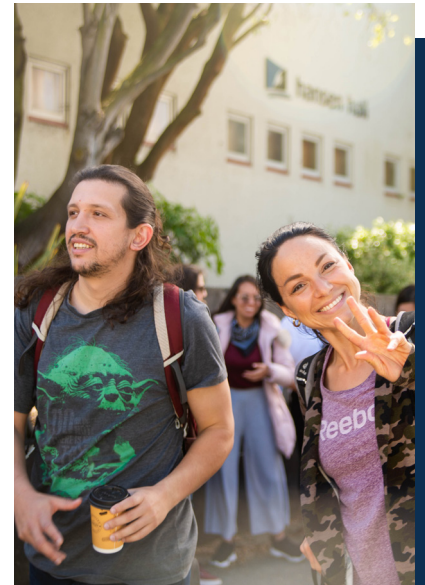


Arrowtown

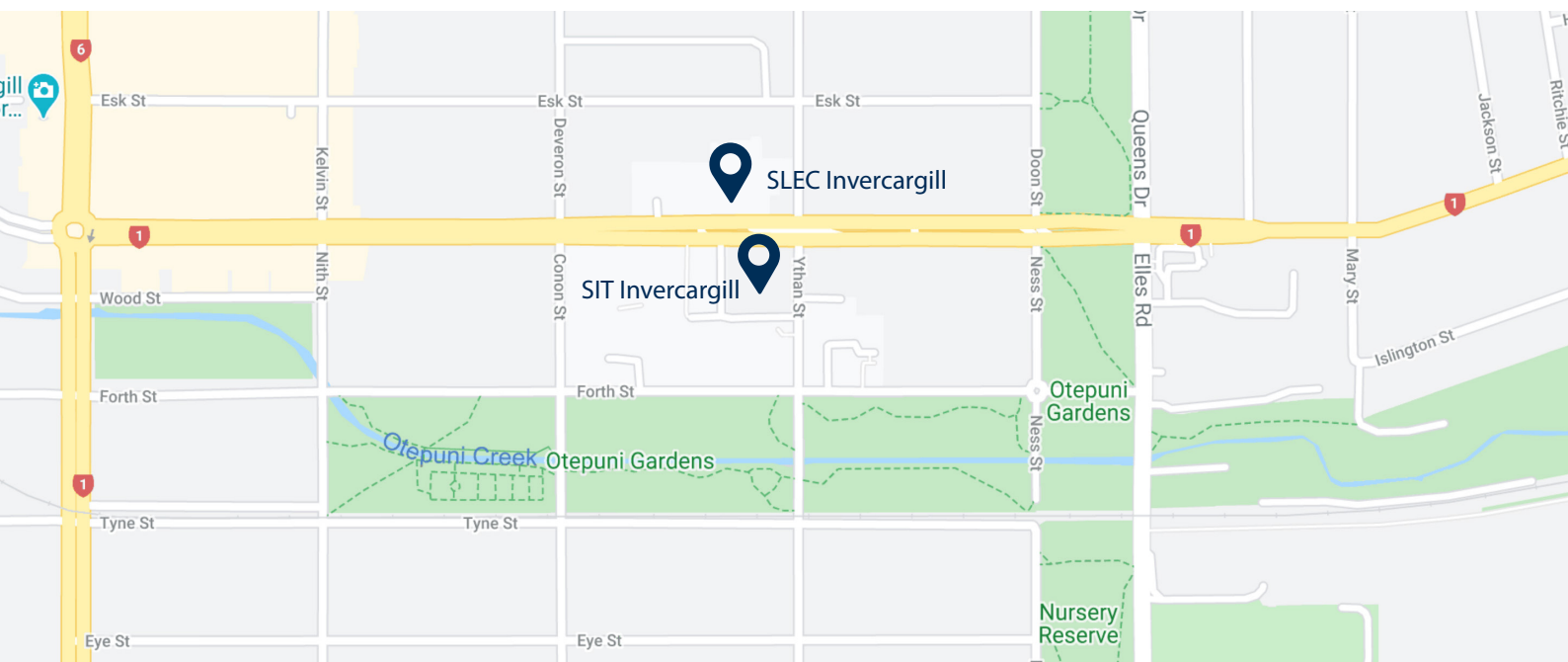
INVERCARGILL CAMPUS

Southern Lakes English College in Invercargill is located in International House, inside the main campus of The Southern Institute of Technology, and just a few blocks from the city centre.

Our staff are well-qualified, experienced and caring. We pride ourselves on the supportive 'family' atmosphere provided, where students make lifetime friendships as they study towards their future goals.



- 75 – 130 students
- 10 classrooms
- SIT facilities: lounge area, cafe and library
- Weekend Day trip to Queenstown & Dunedin
- Kitchenette
- Mix of nationalities from over 30 countries
- Pearson VUE® Authorized Test Center
- English Only Zone
- No more than 17 students per class



INVERCARGILL INFO

“Invercargill (Waihōpai) is the regional capital and commercial hub of Southland. Founded in the 1850s, it is New Zealand’s southernmost city - and one of the southernmost cities in the world”. (Southland New Zealand).

This small city provides a welcoming and friendly atmosphere, influenced by early Māori and European settlers; the city is full of grand architecture, and world-class amenities.

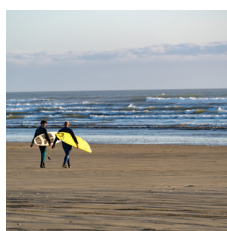
Invercargill has plenty of natural beauty: rolling hills, native bush, unspoilt coastlines, mountain ranges, rivers and lakes. Also, the city provides excellent indoor activities such as a velodrome, hockey turfs, a swimming pool and rugby stadium.

The Southland region’s economy is based on agriculture and the area has gained a top reputation both nationwide and worldwide for delivering innovative and high quality educational programmes. There is something for everyone in Invercargill!

- Population in Invercargill: 55,000 people approximately
- Average temperature: 0°C – 22°C
- The sun sets in summer around 10pm
- Regional Development Project that aims to attract 10,000 people by 2025
- One of NZ’s lowest living costs
- The best environment for families
- The Aurora Australis is commonly seen in Southland, known as “City of Water and Light”
- Close to The Catlins, Queenstown and Milford Sound
- The city hosts the largest indoor stadium in New Zealand
- Recognised as New Zealand’s “Classic Motoring Capital”, boasting an impressive vintage truck collection.



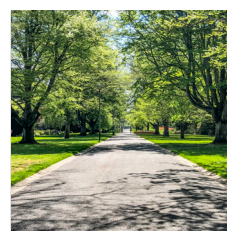
Stewart Island



Oreti Beach



Riverton Harbour



Queens Park



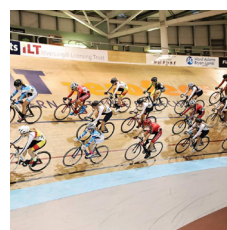
Bluff



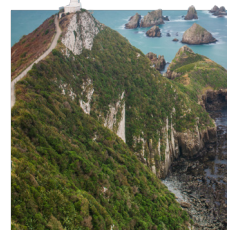
Splash Palace



Kepler Track,
Fiordland



SIT Velodrome



Nugget Point



ILT Stadium



GENERAL ENGLISH

Our General English aims to develop the main skills of the language: writing, reading, listening and speaking. Students can choose between part-time or full-time (depending on course length) and will be allocated to either a morning or afternoon timetable.

*Conditions Apply

Course length: Minimum of 4 weeks

Class size: 12 (average) / 17 (max)

Age: 18+

Campus: Queenstown & Invercargill

Course starts: 1st & 3rd Monday

Levels: Beginner to Advanced

Length: 4 – 13 wks (Visitor visa holders)

4 – 26 wks (WH visa holders)

Lessons: Full-time (for student visa must be full time)



ACADEMIC ENGLISH

Southern Lakes English College provides excellent exam focused classes for its academic students and it is a testing centre for the University of Cambridge and for TOEIC Examinations.

Students can prepare for the following examinations:

- IELTS (General and Academic)
- Pearson Test of English (PTE)

Course length: Minimum of 4 weeks

Campus: Queenstown & Invercargill

Class size: 12 (average) / 17 (max)

Age: 18+

Course starts: 1st & 3rd Monday

Levels: from Intermediate upwards

Length: 4 – 13 wks (Visitor visa holders)

4 – 26 wks (WH visa holders)

Lessons: Full-time

Timetable: Morning and Afternoon (may vary according to campus)



STAY WITH US!

HOMESTAY

Enjoy the opportunity to live with a local family and experience the real Kiwi home life. We always have a welcoming family waiting for you!

- Private and shared rooms with a shared bathroom
- Breakfast and dinner during the week including three meals at the weekends
- Two or more international students may live in the same Homestay
- The homestay families are located within a short 30 minute bus-ride from the school.

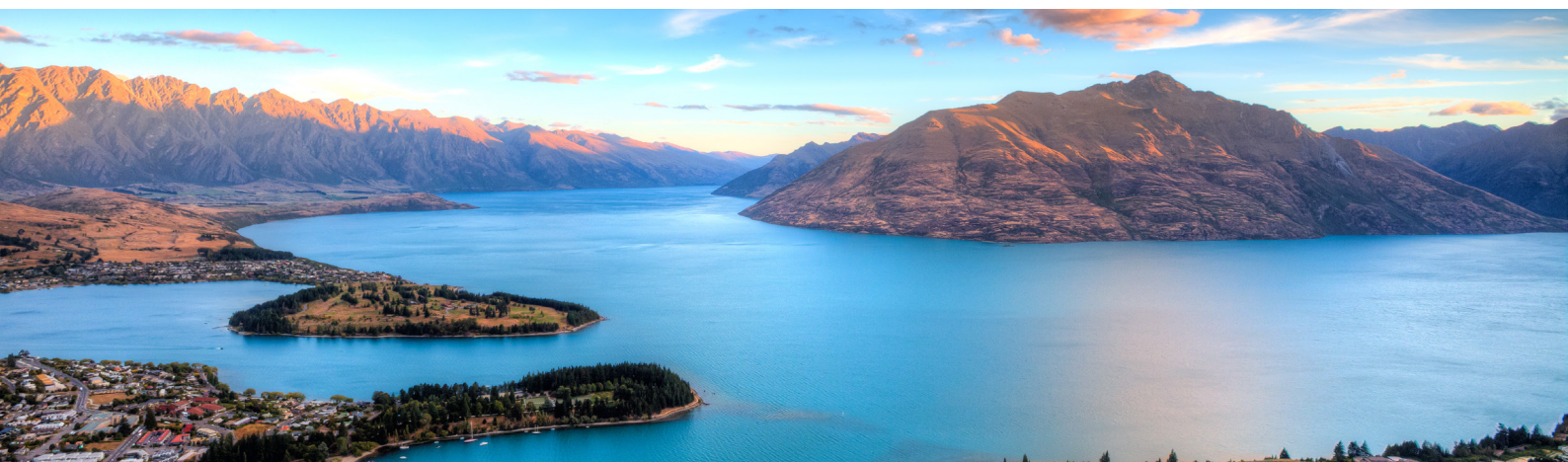


AIRPORT PICK UP

We want our students to feel comfortable and safe upon their arrival.

In partnership with the local taxi firms, we organise airport transfers for our students, if they choose to avail of one. An airport drop-off transfer is also available.

SLEC has an emergency number available once our students arrive in New Zealand. We encourage them to add it to one of the apps: Whatsapp or Line. All the information will be sent in advance.



PASTORAL CARE

CODE OF PRACTICE

When students come to study in New Zealand, education providers have an important responsibility to ensure that those students are well-informed, safe, and properly cared for.

The Education (Pastoral Care of Tertiary and International Learners) Code of Practice 2021 is a document that clearly outlines the full legal requirements that education providers en-rolling international students must abide by. At SLEC we care about the protection of our students by following all the requirements on the code. The full, legislative version is also available on the New Zealand Qualifications Authority website.

PUBLIC TRUST

The New Zealand Government requires all private training establishments registered with the New Zealand Qualifications Authority (NZQA) to have some form of protection for fees paid to them in advance. This is a student fee trust account which ensures that students receive a refund of the fees (or portion of fees) in case something happens to the provider due to closure, insolvency or loss of NZQA accreditation.

INSURANCE

All international students are required to have appropriate medical and travel insurance while studying in New Zealand. At SLEC, we provide one of the best insurance packages, the **Southern Cross Travel Insurance**. It offers the cover the students need with the comfort of knowing they will be looked after if the unexpected happens.

This policy covers medical and evacuation costs, changes to your journey, personal accident, personal liability, rental vehicle excess, cash and travel documents, and baggage and personal items, for individual or family cover.



[Code of Practice Link](#)



HOW TO APPLY

1 - Choose your course.

2 - Apply online at www.slec.co.nz with us or with one of our partner agents. You will receive a letter of offer and invoice.

3 - Provide payment.

4 - After providing the full payment, SLEC will send you a Receipt of Fees so then you can apply for the visa, if required.

For visa information visit <https://www.slec.co.nz/visas>

5 - Finally, send your flight details and SLEC will arrange your accommodation and insurance, if requested.

6 - Welcome onboard. Visit our website for full information about your first day at SLEC: <https://www.slec.co.nz/yourfirstday> and get access to our school App.



WHAT OUR STUDENTS ARE SAYING

"I love the SLEC, I've been studying here for four months, and I've decided to extend my course to improve my English even more.

SLEC is amazing, the teachers are nice and they make me feel comfortable about learning English. They help us with everything as well as provide us a good support and teaching methodology.

I love Queenstown, I love SLEC and I love being here!"

Vandrisa Rosso, Brazil

"Queenstown is a nice place. The nature is breathtaking! There is a lake and at the same time mountains. If you like outdoor sports, Queenstown is definitely the place for you...You can find your way around quickly and the people are very helpful. My teacher was great! She had a good sense of humour. Her classes were varied and interesting."

Carina, Switzerland

"I improved my English skills while I was studying in SLEC and the SLEC team helped me to achieve more than my goal; passing the PTE score that I needed to study in SIT for my next stage.

Great teachers and convenient location! I'm delighted to have had the opportunity to learn with them! Thank you!"

Mankyu Jang, South Korea

"If I had the opportunity to study English again, I'd choose SLEC. I haven't had a problem while I've studied at SLEC... My teachers made me feel confident and proud of my goals! I loved Queenstown from the moment I first arrived there, I knew I'd chosen the best place to live."

Diana, Peru





QUEENSTOWN CAMPUS

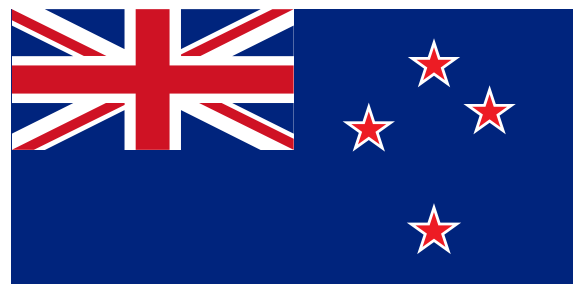
Level 1, 57 Shotover Street

☎ +64 (0) 3 442 7810

INVERCARGILL CAMPUS

133 Tay Street

☎ +64 (0) 3 211 2699



NEW ZEALAND

WWW.SLEC.CO.NZ

