

# INTERNATIONAL STUDENT

## COURSE MINI GUIDE 2021



**ENGLISH  
LANGUAGE**

**BUSINESS &  
MANAGEMENT**  
Business & Leadership

**HOSPITALITY**  
Commercial Cookery &  
Hospitality Management

**HEALTH &  
COMMUNITY  
SERVICES**

**EARLY  
CHILDHOOD  
EDUCATION**

**PROFESSIONAL  
YEAR PROGRAM**  
Accounting &  
Australian Computer Society

**HIGHER  
EDUCATION**  
Undergraduate &  
Postgraduate

**SHORT  
COURSES**

## A PERSONAL MESSAGE FROM OUR PRESIDENT

In light of the dramatic upheavals of recent times, pursuit of an international education must be a greater adventure than ever. For those prepared to face the kind of uncertainty and confusion the world has experienced, there are great opportunities. And the best form of preparation, as we all know, is education.

Of course, adventure carries risk. Australia is known to be a safe destination for international students, but its extraordinary success in managing the COVID pandemic has shown just how stable this country is. No Australian state has done as well as Western Australia in allowing so much "business as usual" and maintaining the Perth lifestyle students and residents love. Only few education providers were able to support international students in these critical times with as little disruption to their study plan as has Stanley College.

As the world embarks on the exciting journey of post-pandemic recovery, Stanley College is here to help you **DISCOVER** your own path, **LEARN** how to travel it successfully, and to **ENJOY** the journey.

We offer courses that provide clear pathways to employment and further study. We allow for as much articulation into higher qualifications as possible, with credit arrangements for time and cost savings. We provide scholarship opportunities and financing facilities if needed. We emphasise the importance of practical experience, with Work Based Training in our Vocational courses, and Work Integrated Learning in our Higher Education offerings.

It is certainly an exciting time to be a student. It would be my privilege, and that of the whole Stanley College community, to support you on this great adventure.

### Alberto Tassone

President, Stanley College



**HALL OF FAME MEMBER**  
Education & Training Award  
2016, 2017, 2018

## WHY PERTH



One of the **MOST LIVEABLE CITIES** in the world.



265 **SUNNY DAYS** every year with the longest coastal shore lines and beautiful beaches.



### REGULAR FLIGHTS

Come to Perth from any part of the world via any major cities.



### EMPLOYMENT OPPORTUNITIES

One of the fastest growing cities in Australia with a booming industry that creates more employment opportunities, especially in Hospitality and Health.



**FREE PUBLIC TRANSPORT** within the city



**DIVERSITY** with Culinary delights from all over the world!

**Stanley College is a member of the following associations:**



## WHY STANLEY COLLEGE

### ONLINE COURSES

Full and partial Online Courses available.

### PACKAGED COURSES

Options to package from English, Certificate, Diploma, Undergraduate, and Postgraduate studies.

### REPUTATION

Highly recognised and award winning registered training organisation.

### LOCATION

Conveniently located campuses near public transport.

### WORK-BASED TRAINING

Work-based training and internships for most study pathways.

### SOCIAL ACTIVITIES

Weekly social, sporting and cultural activities.

### FLEXIBLE CLASSES

Weekday and weekend class options available for most courses.

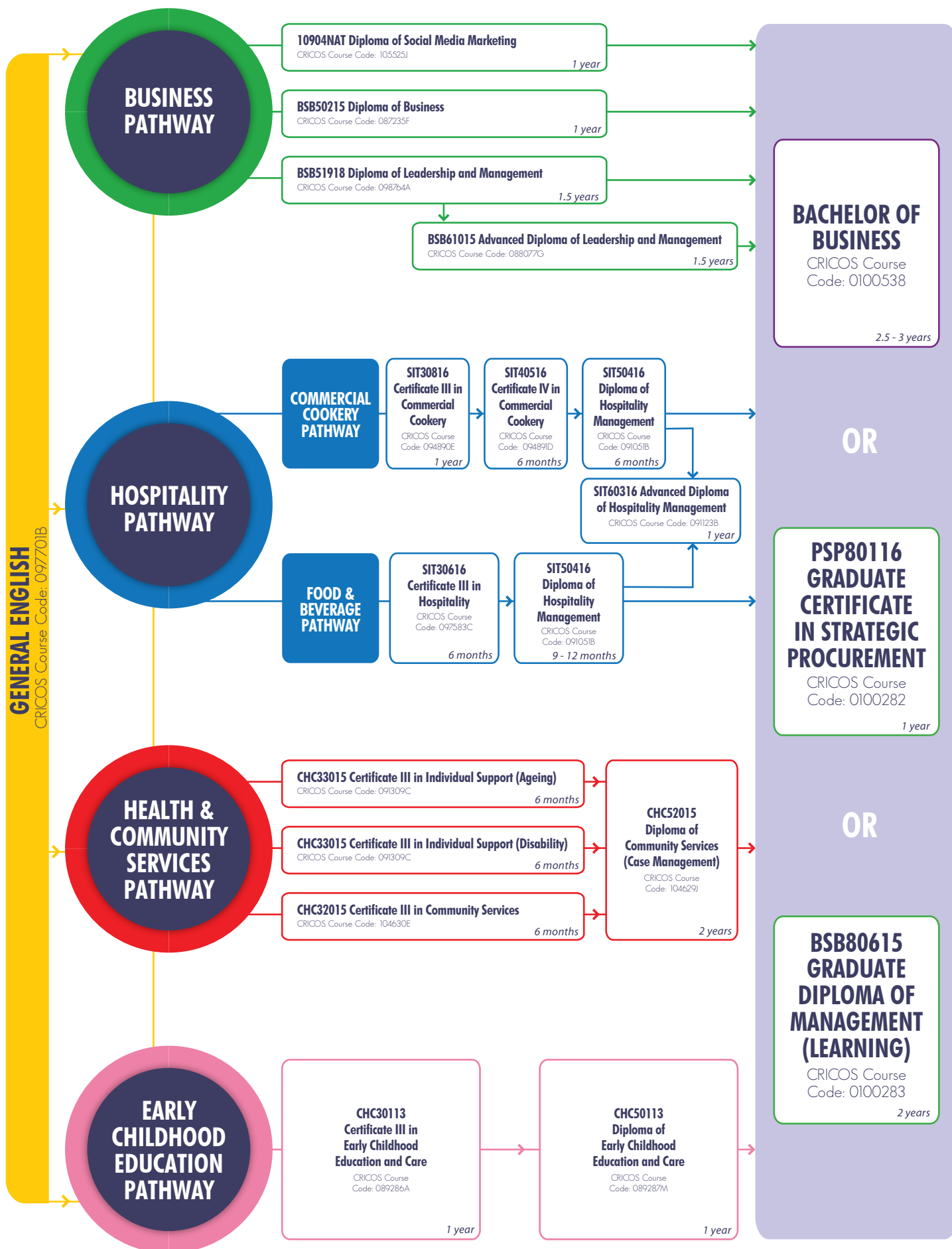
### PATHWAY PROGRAMS

University pathways for Diploma and Advanced Diploma courses.

### PAYMENT PLANS

Quarterly and monthly payment options available.

# STUDY PATHWAYS AT STANLEY COLLEGE



Exit at any stage with a qualification



## STUDENT TESTIMONIALS



“

I love everything about Stanley College, from the trainers, to facilities to student support. The best part about my course is the Work Based Training. As part of my Certificate III, I was given the opportunity to work at PCEC (Perth Convention and Exhibition Centre) where I worked alongside other chefs who taught me good work ethics and habits whilst working in an industrial kitchen. My trainer in particular would give us tips and shortcuts making sure that we are equipped with proper methods and techniques.

**Yosephine, Indonesia**  
Commercial Cookery

”

“

I chose to come to Perth because some of my friends were already here. I like studying at Stanley College because the teachers and classmates are really nice to me. The classrooms and facilities are very new and modern here. After my English course, I will continue my studies into the Diploma of Business. Once I complete my studies, I would like to work with a travel company. Stanley College is a good school and I would recommend to my friends.

**Chi Kwai, Hong Kong**  
General English

”



“

I decided to study at Stanley College because it was highly recommended by my friend. I love their campus in West Perth as it is modern and big. The best things about my course are the practical classes and the trainers. They are very friendly and always happy to assist me with everything. Once I finish my course I will be confident and qualified to go back to Italy and continue my career in Early Childhood Education.

**Sara, Italy**  
Early Childhood Education and Care

”



“

I first came here on a Working Holiday Visa but decided to enrol in a Hospitality course as an International student because I was interested in pursuing a career in Hospitality and Management. I came across Stanley College in Perth city, which was very conveniently located for me to commute to study and work. Studying at Stanley College has given me the knowledge, skills and work experience within the industry. I now work part-time with a very nice Asian fusion restaurant in Perth and I am glad to have embarked on this journey.

**Soraya, Thailand**  
Diploma of Hospitality Management

”







### INTAKE DATES (2021)

Every Monday

### COURSE DURATION

- 4 - 75 weeks
- 20 scheduled course contact hours per week + FREE optional GIL (Guided Individual Learning) sessions.

*Full-time studies requires students to attend 20 hours face-to-face scheduled course contact per week*

### STUDY MODES

- Face-to-face classroom-based learning
- Group-work
- Oral Presentations
- Discussion groups
- Vocabulary building exercises
- Excursions

### COURSE CONTENT

Speaking and listening

- Grammar
- Vocabulary
- Pronunciation
- Communication and conversation strategies
- Read and writing

### LEVELS

- Beginner - Upper-Intermediate

### TIMETABLE

- 8:00am - 12:00noon (Mon - Fri)

### COST

- Tuition Fee: \$250 per week

*\* Stanley College has paused our face-to-face classes in General English for 2021*





## SIT30816 CERTIFICATE III IN COMMERCIAL COOKERY

CRICOS Course Code 094890E



## SIT40516 CERTIFICATE IV IN COMMERCIAL COOKERY

CRICOS Course Code 094891D



### INTAKE DATES (2021)

4 Jan / 15 Mar / 24 May / 2 Aug / 4 Oct

### COURSE DURATION

- 52 weeks (Including 12 weeks of holidays)
  - 2½ days per week
- Full Time studies requires students to attend a minimum of 20 scheduled course contact hours per week*

### WORK BASED TRAINING

- 200 hours in 10 weeks

### STUDY MODES

- Face-to-face classroom-based learning
- Practical training and assessment is completed in commercial kitchens, including Perth Convention and Exhibition Centre (PCEC) and Stanley College's The Culinary Workshop.
- Work-Based Training

### CAREER OPPORTUNITY

- Cook

### COURSE ENTRY REQUIREMENTS

#### Academic

- Completion of Australian Year 10 or equivalent

#### English Proficiency

- Intermediate Level of English / IELTS 5.0 / Other recognised English Language tests

### COST

- Tuition Fee: \$10,900
- Materials Fee: \$1,100

### INTAKE DATES (2021)

4 Jan / 15 Mar / 24 May / 2 Aug / 4 Oct

### COURSE DURATION

- 26 weeks (Including 6 weeks of holidays)
  - 2½ days per week
- Full Time studies requires students to attend a minimum of 20 scheduled course contact hours per week*

### STUDY MODES

- Face-to-face classroom-based learning
- Practical training and assessment at The Culinary Workshop

### CAREER OPPORTUNITY

- Chef
- Chef de partie

### COURSE ENTRY REQUIREMENTS

#### Academic

- Completion of Australian Year 11 or equivalent

#### English Proficiency

- Intermediate Level of English / IELTS 5.0 / Other recognised English Language tests

### COURSE PREREQUISITE REQUIREMENT

- Completion of SIT30816 Certificate III in Commercial Cookery

### COST

- Tuition Fee: \$5,200
- Materials Fee: \$300



## COMMERCIAL COOKERY PATHWAY



## SIT50416 DIPLOMA OF HOSPITALITY MANAGEMENT (COMMERCIAL COOKERY PATHWAY)

CRICOS Course Code 091051B



### INTAKE DATES (2021)

4 Jan / 15 Mar / 24 May / 2 Aug / 4 Oct

### COURSE DURATION

- 26 weeks (Including 6 weeks of holidays)
  - 2½ days per week
- Full Time studies requires students to attend a minimum of 20 scheduled course contact hours per week*

### STUDY MODES

- Face-to-face classroom-based learning
- Practical training and assessment at The Culinary Workshop

### CAREER OPPORTUNITY

- Chef de Cuisine
- Kitchen Manager
- Sous Chef

### COURSE ENTRY REQUIREMENTS

#### Academic

- Completion of Australian Year 12 or equivalent

#### English Proficiency

- Upper-intermediate Level of English / IELTS 5.5 / Other recognised English Language tests

### COURSE PREREQUISITE REQUIREMENT

- Completion of SIT40516 Certificate IV in Commercial Cookery

### COST

- Tuition Fee: \$5,200
- Materials Fee: \$150

## SIT60316 ADVANCED DIPLOMA OF HOSPITALITY MANAGEMENT (COMMERCIAL COOKERY PATHWAY)

CRICOS Course Code 091123B



### INTAKE DATES (2021)

4 Jan / 15 Mar / 24 May / 2 Aug / 4 Oct

### COURSE DURATION

- 52 weeks (Including 12 weeks of holidays)
  - 2½ days per week
- Full Time studies requires students to attend a minimum of 20 scheduled course contact hours per week*

### STUDY MODES

- Face-to-face classroom-based learning
- Business Hub simulated workplace activities

### CAREER OPPORTUNITY

- Executive Chef
- Head Chef
- Executive Sous Chef

### COURSE ENTRY REQUIREMENTS

#### Academic

- Completion of Australian Year 12 or equivalent

#### English Proficiency

- Upper-intermediate Level of English / IELTS 5.5 / Other recognised English Language tests

### COURSE PREREQUISITE REQUIREMENT

- SIT50416 Diploma of Hospitality Management (Commercial Cookery Pathway)

### COST

- Tuition Fee: \$9,600
- Materials Fee: \$300

A member of:



Restaurant & Catering

## PRACTICAL VENUES FOR COMMERCIAL COOKERY and HOSPITALITY COURSES



### THE CULINARY WORKSHOP

As the official training venue for Stanley College hospitality courses, The Culinary Workshop is open to the general public and has two commercial kitchens and a restaurant on campus. This provides students with a distinct advantage as they can develop and improve their cookery, management, customer service and other skills in a real work environment.

## PRACTICAL TRAINING AT THE PERTH CONVENTION AND EXHIBITION CENTRE (PCEC)

The Perth Convention and Exhibition Centre (PCEC) is Western Australia's only purpose-built conference, exhibition, and meeting space. The convention centre has six multi-function exhibition pavilions, a theatre with 2,500 capacity and a ballroom with stunning views over the Swan River.

Stanley College and our students are given exclusive access to undertake their practical training in the convention centre's commercial kitchen.



[www.stanleycollege.edu.au](http://www.stanleycollege.edu.au)

## SIT30616 CERTIFICATE III IN HOSPITALITY

CRICOS Course Code : 097583C



## SIT50416 DIPLOMA OF HOSPITALITY MANAGEMENT (FOOD & BEVERAGE PATHWAY)

CRICOS Course Code 091051B



### INTAKE DATES (2021)

4 Jan / 15 Mar / 24 May / 2 Aug / 4 Oct

### COURSE DURATION

- 26 weeks (Including 7 weeks of holidays)
- 2½ days per week
- Full Time studies requires students to attend a minimum of 20 scheduled course contact hours per week*

### WORK-BASED TRAINING

- 140 hours in 7 weeks

### STUDY MODES

- Face-to-face classroom-based learning
- Practical training and assessment at the Culinary Workshop
- Work-Based Training

### CAREER OPPORTUNITY

- Espresso Coffee Machine Operator
- Food and Beverage Attendant
- Function Attendant
- Function Host
- Restaurant Host
- Senior Bar Attendant
- Waiter

### COURSE ENTRY REQUIREMENTS

#### Academic

- Completion of Australian Year 10 or equivalent

#### English Proficiency

- Intermediate Level of English / IELTS 5.0 / Other recognised English Language tests

#### COST

- Tuition Fee: \$5,200
- Materials Fee: \$300

### OPTION 1: 36 Weeks (Advanced Standing)

### INTAKE DATES (2021)

4 Jan / 15 Mar / 24 May / 2 Aug / 4 Oct

### COURSE DURATION

- 36 weeks (including 6 weeks of holidays)
- 2½ days per week
- Full Time studies requires students to attend a minimum of 20 scheduled course contact hours per week*

### STUDY MODES

- Face-to-face classroom-based learning
- Practical training and assessment at the Culinary Workshop
- Work-Based Training

### CAREER OPPORTUNITY

- Banquet or Function Manager
- Restaurant Manager
- Bar and Cafe Manager
- Club Manager
- Motel Manager
- Unit Manager (Catering Operations)

### COURSE ENTRY REQUIREMENTS

#### Academic

- Completion of Australian Year 12 or equivalent

#### English Proficiency

- Upper-intermediate Level of English / IELTS 5.5 / Other recognised English Language tests

### COURSE PREREQUISITE REQUIREMENT

- Completion of the SIT30616 Certificate III in Hospitality

#### COST

- Tuition Fee: \$6,600
- Materials Fee: \$150



## FOOD AND BEVERAGE PATHWAY



## SIT50416 DIPLOMA OF HOSPITALITY MANAGEMENT (FOOD & BEVERAGE PATHWAY)

CRICOS Course Code 091051B



## SIT60316 ADVANCED DIPLOMA OF HOSPITALITY MANAGEMENT (FOOD AND BEVERAGE)

CRICOS Course Code 091123B



### Option 2: 52 Weeks (Direct Entry)

#### INTAKE DATES (2021)

4 Jan / 15 Mar / 24 May / 2 Aug / 4 Oct

#### COURSE DURATION

- 52 Weeks (including 12 weeks of holidays)
- 2½ days per week.

*Full Time studies requires students to attend a minimum of 20 scheduled course contact hours per week*

#### WORK-BASED TRAINING

- 108 hours in 5 weeks

#### CAREER OPPORTUNITY

- Banquet or Function Manager
- Restaurant Manager
- Bar and Cafe Manager
- Club Manager
- Motel Manager
- Unit Manager (Catering Operations)

#### COURSE ENTRY REQUIREMENTS

##### Academic

- Completion of Australian Year 12 or equivalent

##### English Proficiency

- Upper-intermediate Level of English / IELTS 5.5 / Other recognised English Language tests

#### COURSE PREREQUISITE REQUIREMENT

- No prerequisite entry requirements exist for this course.

#### COST

- Tuition Fee: \$8,600
- Materials Fee: \$600

### INTAKE DATES (2021)

4 Jan / 15 Mar / 24 May / 2 Aug / 4 Oct

#### COURSE DURATION

- 52 Weeks (including 12 weeks of holidays)
- 2½ days per week.

*Full Time studies requires students to attend a minimum of 20 scheduled course contact hours per week*

#### STUDY MODES

- Face-to-face classroom-based learning
- Business Hub simulated workplace activities

#### CAREER OPPORTUNITY

- Area Manager or Operations Manager
- Cafe Owner or Manager
- Club Secretary or Manager
- Motel Owner or Manager
- Food and Beverage Manager

#### COURSE ENTRY REQUIREMENTS

##### Academic

- Completion of Australian Year 12 or equivalent

##### English Proficiency

- Upper-intermediate Level of English / IELTS 5.5 / Other recognised English Language tests

#### COURSE PREREQUISITE REQUIREMENT

- Completion of SIT50416 Diploma of Hospitality Management (Food and Beverage Pathway)

#### COST

- Tuition Fee: \$9,600
- Materials Fee: \$300

## INDUSTRY PARTNERS



More Industry Partners



## CHC33015 CERTIFICATE III IN INDIVIDUAL SUPPORT (AGEING)

CRICOS Course Code 091309C



## CHC33015 CERTIFICATE III IN INDIVIDUAL SUPPORT (DISABILITY)

CRICOS Course Code 091309C



### INTAKE DATES (2021)

18 Jan / 15 Feb / 15 Mar / 12 Apr / 10 May / 7 Jun /  
5 Jul / 2 Aug / 30 Aug / 27 Sep / 25 Oct / 22 Nov

### COURSE DURATION

- 26 weeks (Including 6 weeks of holidays) **Standard Pathway**
- 16 weeks **Intensive Pathway\***
- 3 days per week
- Weekday & weekend classes available

*Full Time studies requires students to attend a minimum of  
20 scheduled course contact hours per week*

### WORK-BASED TRAINING

- 160 hours in 8 weeks
- National Police Clearance (WA)\*
- Medical Clearance may also be required\*
- Evidence of Flu Vaccination\*

*\*Required to complete the work-based training component of the course*

### STUDY MODES

- Face-to-face classroom-based learning.
- Practical simulated activities in Stanley College ward
- Work-based training

### CAREER OPPORTUNITY

- Accommodation Support Worker
- Personal Care Giver
- Respite Care Worker
- Nursing Assistant

### COURSE ENTRY REQUIREMENTS

#### Academic

- Completion of Australian Year 10 or equivalent

#### English Proficiency

- Intermediate Level of English / IELTS 5.0 / Other recognised English Language tests

### COST

#### Standard Pathway

- Tuition Fee: \$4,300
- Materials Fee: \$300

#### Optional add-on:

Disability (DIS): \$840

#### Intensive Pathway\*

- Tuition Fee: \$1,950
- Materials Fee: N/A

#### Optional add-on:

Disability (DIS): \$420

### INTAKE DATES (2021)

18 Jan / 15 Feb / 15 Mar / 12 Apr / 10 May / 7 Jun /  
5 Jul / 2 Aug / 30 Aug / 27 Sep / 25 Oct / 22 Nov

### COURSE DURATION

- 26 weeks (Including 6 weeks of holidays) **Standard Pathway**
- 16 weeks **Intensive Pathway\***
- 3 days per week
- Weekday classes available

*Full Time studies requires students to attend a minimum of  
20 scheduled course contact hours per week*

### WORK-BASED TRAINING

- 160 hours in 8 weeks
- National Police Clearance (WA)\*
- Medical Clearance may also be required\*
- Evidence of Flu Vaccination\*

*\*Required to complete the work-based training component of the course*

### STUDY MODES

- Face-to-face classroom-based learning.
- Practical simulated activities in Stanley College ward
- Work-based training

### CAREER OPPORTUNITY

- Disability Support Worker
- Personal Care Giver
- Respite Care Worker
- Community Worker

### COURSE ENTRY REQUIREMENTS

#### Academic

- Completion of Australian Year 10 or equivalent

#### English Proficiency

- Intermediate Level of English / IELTS 5.0 / Other recognised English Language tests

### COST

#### Standard Pathway

- Tuition Fee: \$4,300
- Materials Fee: \$300

#### Optional add-on:

Ageing (AGE): \$840

#### Intensive Pathway\*

- Tuition Fee: \$1,950
- Materials Fee: N/A

#### Optional add-on:

Ageing (AGE): \$420

## HEALTH AND COMMUNITY SERVICES



## CHC32015 CERTIFICATE III IN COMMUNITY SERVICES

CRICOS Course Code 104630E



### INTAKE DATES (2021)

8 Feb / 15 Feb / 15 Mar / 12 Apr / 10 May / 7 Jun /  
5 Jul / 2 Aug / 30 Aug / 27 Sep / 25 Oct / 22 Nov

### COURSE DURATION

- 26 weeks (Including 6 weeks of holidays) **Standard Pathway**
- 15 weeks **Intensive Pathway**
- 3 days per week
- Weekday & weekend classes available

*Full Time studies requires students to attend a minimum of  
20 scheduled course contact hours per week*

### WORK-BASED TRAINING

- 160 hours in 8 weeks
- National Police Clearance (WA)^
- Medical Clearance may also be required^
- Evidence of Flu Vaccination^
- Current Working with Children Check (WWCC)^

*^Required to complete the work-based training component of the course*

### STUDY MODES

- Face-to-face classroom-based learning.
- Practical simulated activities in Stanley College ward
- Work-based training

### CAREER OPPORTUNITY

- Migrant Support Worker
- Neighbourhood Centre Worker
- Support Workers (Community Services)
- Assistant Community Worker

### COURSE ENTRY REQUIREMENTS

#### Academic

- Completion of Australian Year 10 or equivalent

#### English Proficiency

- Intermediate Level of English / IELTS 5.0 / Other recognised English Language tests

### COST

#### Standard Pathway

- Tuition Fee: \$4,300
- Materials Fee: \$300

#### Intensive Pathway\*

- Tuition Fee: \$1,950
- Materials Fee: N/A

\* Course duration does not include holidays, and requires WBT placement to be completed full time (minimum 38 hours per week)

## INDUSTRY PARTNERS



## CHC52015 DIPLOMA IN COMMUNITY SERVICES (CASE MANAGEMENT)

CRICOS Course Code 104629J



### INTAKE DATES (2021)

1 Feb / 15 Mar / 10 May / 7 Jun / 5 Jul  
16 Aug / 27 Sep / 8 Nov

### COURSE DURATION

- 104 weeks (Including 24 weeks of holidays)
- 3 days per week
- Weekday classes available

*Full Time studies requires students to attend a minimum of  
20 scheduled course contact hours per week*

### WORK-BASED TRAINING

- 400 hours in 20 weeks
- National Police Clearance (WA)^
- Medical Clearance may also be required^
- Evidence of Flu Vaccination^
- Current Working with Children Check (WWCC)^

*^Required to complete the work-based training component of the course*

### STUDY MODES

- Face-to-face classroom-based learning.
- Practical simulated activities in Stanley College ward
- Work-based training

### CAREER OPPORTUNITY

- Child Welfare Officer
- Community Services Worker
- Social Housing Coordinator
- Community services Case Manager

### COURSE ENTRY REQUIREMENTS

#### Academic

- Completion of Australian Year 12 or equivalent

#### English Proficiency

- Upper-Intermediate Level of English / IELTS 5.5 / Other recognised English Language tests

### COST

- Tuition Fee: \$18,000
- Materials Fee: \$900



More Industry  
Partners

# CHC30113 CERTIFICATE III IN EARLY CHILDHOOD EDUCATION AND CARE

CRICOS Course Code 089286A



## INTAKE DATES (2021)

4 Jan / 18 Jan / 15 Feb / 15 Mar / 12 Apr / 10 May / 7 Jun /  
5 Jul / 2 Aug / 30 Aug / 27 Sep / 25 Oct / 22 Nov

## COURSE DURATION

- 52 weeks (Including 12 weeks of holidays)
- 3 days per week

*Full Time studies requires students to attend a minimum of  
20 scheduled course contact hours per week*

## WORK-BASED TRAINING

- 240 hours in 12 weeks
- Current Working with Children Check<sup>^</sup>

*<sup>^</sup>Required to complete the work-based training component of the course*

- National Police Clearance\*

*\*To be employed in the Early Childhood Education industry, a National Police Clearance is not required. However some WBT employers may require that you obtain one prior to commencing your WBT placement.*

## STUDY MODES

- Face-to-face classroom-based learning
- Work-based training
- Simulated work experience (in the Stanley College Crèche)

## CAREER OPPORTUNITY

- Early Childhood Educator - Assistant level
- Family Day Care Carer
- Kindergarten Assistant
- Nanny
- Preschool Assistant

## COURSE ENTRY REQUIREMENTS

### Academic

- Completion of Australian Year 10 or equivalent

### English Proficiency

- Intermediate Level of English / IELTS 5.0 / Other recognised English Language tests

## COST

- Tuition Fee: \$8,200
- Materials Fee: \$450

# CHC50113 DIPLOMA OF EARLY CHILDHOOD EDUCATION AND CARE

CRICOS Course Code 089287M



## INTAKE DATES (2021)

18 Jan / 15 Feb / 15 Mar / 12 Apr / 10 May / 7 Jun /  
12 Jul / 9 Aug / 6 Sep / 4 Oct / 1 Nov / 29 Nov

## COURSE DURATION

- 52 weeks (Including 12 weeks of holidays)
- 3 days per week

- Weekday & weekend classes available

*Full Time studies requires students to attend a minimum of  
20 scheduled course contact hours per week*

## WORK-BASED TRAINING

- 300 hours in 15 weeks
- Current Working with Children Check<sup>^</sup>

*<sup>^</sup>Required to complete the work-based training component of the course*

- National Police Clearance\*

*\*To be employed in the Early Childhood Education industry, a National Police Clearance is not required. However some WBT employers may require that you obtain one prior to commencing your WBT placement.*

## STUDY MODES

- Face-to-face classroom-based learning
- Structured learning activities
- Work-based training

## CAREER OPPORTUNITY

- Early Childhood Educator
- Day Care Centre Supervisor / Manager
- Preschool Supervisor / Manager
- Kindergarten Supervisor / Manager

## COURSE ENTRY REQUIREMENTS

### Academic

- Completion of Australian Year 12 or equivalent

### English Proficiency

- Upper-intermediate Level of English / IELTS 5.5 / Other recognised English Language tests

## Course Prerequisite Requirement

- Completion of CHC30113 Certificate III in Early Childhood Education and Care

## COST

- Tuition Fee: \$9,600
- Materials Fee: \$450

## INDUSTRY PARTNERS



More Industry  
Partners



## EARLY CHILDHOOD EDUCATION



## BSB50215 DIPLOMA OF BUSINESS

CRICOS Course Code 087235F



### INTAKE DATES (2021)

4 Jan / 8 Feb / 15 Mar / 26 Apr / 24 May / 14 Jun / 2 Aug / 6 Sep / 4 Oct / 8 Nov

### COURSE DURATION

- 52 weeks (Including 12 weeks of holidays)
- 2½ days per week

*Full Time studies requires students to attend a minimum of 20 scheduled course contact hours per week*

### STUDY MODES

- Face-to-face classroom-based learning
- Online study
- Business hub - simulated workplace

### CAREER OPPORTUNITY

- Executive Officer
- Program Consultant
- Program Coordinator

### COURSE ENTRY REQUIREMENTS

#### Academic

- Completion of Australian Year 12 or equivalent

#### English Proficiency

- Upper-Intermediate Level of English / IELTS 5.5 / Other recognised English Language tests

### COST

- Tuition Fee: \$8,600
- Materials Fee: \$300



**STUDY ONLINE NOW**  
for offshore students

## 10904NAT DIPLOMA OF SOCIAL MEDIA MARKETING

CRICOS Course Code 105525J



### INTAKE DATES (2021)

12 Apr / 24 May / 2 Aug / 4 Oct

### COURSE DURATION

- 52 weeks (Including 12 weeks of holidays)
- 2½ days per week

*Full Time studies requires students to attend a minimum of 20 scheduled course contact hours per week*

### STUDY MODES

- Face-to-face classroom-based learning
- Online study
- Business hub - simulated workplace

### CAREER OPPORTUNITY

- Digital / Social Media Strategy Manager
- Content Marketing Strategist
- Digital / Social Media Coordinator

### COURSE ENTRY REQUIREMENTS

#### Academic

- Completion of Australian Year 12 or equivalent

#### English Proficiency

- Upper-Intermediate Level of English / IELTS 5.5 / Other recognised English Language tests

### COST

- Tuition Fee: \$7,600
- Materials Fee: \$450

A member of:



**Chamber of Commerce  
and Industry WA**

# BUSINESS AND LEADERSHIP

## BSB51918 DIPLOMA OF LEADERSHIP AND MANAGEMENT

CRICOS Course Code 098764A



### INTAKE DATES (2021)

4 Jan / 15 Mar / 24 May / 2 Aug / 4 Oct

### COURSE DURATION

- 78 weeks (Including 18 weeks of holidays)
- 2½ days per week
- Weekday & weekend classes available

*Full Time studies requires students to attend a minimum of 20 scheduled course contact hours per week*

### STUDY MODES

- Face-to-face classroom-based learning
- Business hub - simulated workplace

### CAREER OPPORTUNITY

- Business Manager
- Human Resources Manager
- Sales Team Manager

### COURSE ENTRY REQUIREMENTS

#### Academic

- Completion of Australian Year 12 or equivalent

#### English Proficiency

- Upper-Intermediate Level of English / IELTS 5.5 / Other recognised English Language tests

### COST

- Tuition Fee: \$12,900
- Materials Fee: \$450

## BSB61015 ADVANCED DIPLOMA OF LEADERSHIP AND MANAGEMENT

CRICOS Course Code 088077G



### INTAKE DATES (2021)

4 Jan / 15 Mar / 24 May / 2 Aug / 4 Oct

### COURSE DURATION

- 78 weeks (Including 18 weeks of holidays)
- 2½ days per week
- Weekday & weekend classes available

*Full Time studies requires students to attend a minimum of 20 scheduled course contact hours per week*

### STUDY MODES

- Face-to-face classroom-based learning
- Business hub - simulated workplace

### CAREER OPPORTUNITY

- Area Manager
- Department Manager
- Regional Manager

### COURSE ENTRY REQUIREMENTS

#### Academic

- Completion of Australian Year 12 or equivalent

#### English Proficiency

- Upper-Intermediate Level of English / IELTS 5.5 / Other recognised English Language tests

### COST

- Tuition Fee: \$12,900
- Materials Fee: \$450





# PSP80116 GRADUATE CERTIFICATE IN STRATEGIC PROCUREMENT

CRICOS Course Code: 0100282



## INTAKE DATES (2021)

4 Jan / 12 Apr / 19 Jul / 11 Oct

## COURSE DURATION

- 52 weeks (Including 12 weeks of holidays)
- 2½ days per week

*Full Time studies requires students to attend a minimum of 20 scheduled course contact hours per week*

## STUDY MODES

- Face-to-face classroom-based learning
- Business hub - simulated workplace
- Currently online due to COVID-19

## CAREER OPPORTUNITY

- Strategic Procurement Manager
- Supply and Distribution Manager
- Procurement Manager
- Logistics Manager
- Supply Chain Manager
- Head of Logistics/Transport
- Strategic Purchasing Manager

## COURSE ENTRY REQUIREMENTS

### Academic

- Completion of a recognised degree or diploma or advanced diploma or equivalent

### English Proficiency

- Upper-Intermediate Level of English / IELTS 6.0 / Other recognised English Language tests

## COURSE PREREQUISITE REQUIREMENT

- Diploma/Advanced Diploma qualification in any field of study (onshore or offshore) or equivalent; or
- Bachelor Degree in any field of study (onshore or offshore) or equivalent; or
- Evidence of relevant work experience.

## COST

- Tuition Fee: \$9,800
- Materials Fee: \$450

# BSB80615 GRADUATE DIPLOMA OF MANAGEMENT (LEARNING)

CRICOS Course Code: 0100283



## INTAKE DATES (2021)

4 Jan / 12 Apr / 19 Jul / 11 Oct

## COURSE DURATION

- 104 weeks (Including 24 weeks of holidays)
- 2½ days per week

*Full Time studies requires students to attend a minimum of 20 scheduled course contact hours per week*

## STUDY MODES

- Face-to-face classroom-based learning
- Business hub - simulated workplace
- Currently online due to COVID-19

## CAREER OPPORTUNITY

- Director, workforce planning and development
- General manager human resources
- General manager/ head of school or registered training organisation (RTO)
- Learning and development senior consultant
- Manager, learning and change management
- Manager, learning and development

## COURSE ENTRY REQUIREMENTS

### Academic

- Completion of a recognised degree or diploma or advanced diploma or equivalent

### English Proficiency

- Upper-Intermediate Level of English / IELTS 6.0 / Other recognised English Language tests

## COURSE PREREQUISITE REQUIREMENT

- Diploma/Advanced Diploma qualification in any field of study (onshore or offshore) or equivalent; or
- Bachelor Degree in any field of study (onshore or offshore) or equivalent; or
- Evidence of relevant work experience (no less than 3 years in a senior management or leadership position).

## COST

- Tuition Fee: \$19,600
- Materials Fee: \$900





# BACHELOR OF BUSINESS

CRICOS Code: 0100538



## INTAKE DATES

8 Mar 2021 / 23 Aug (2021)

7 Mar 2021 / 22 Aug (2022)

## COURSE DURATION

- 3 years full time (2.5 years when packaged)
- Students must complete a total of 240 credit points (24 units with 10 credit points per unit)

*Units will be delivered over 2 semesters per year, with 4 units each semester for a full time load.*

## STUDY MODES

- Face-to-face classroom-based learning
- Work Integrated Learning (WIL)
- Units will be delivered over 2 semesters per year, with 4 units in each semester for a full-time load

## STUDY MODES

- Face-to-face
- Work Integrated Learning (WIL)
- Units will be delivered over 2 semesters per year, with 4 units in each semester for a full-time load

## COST

- \$8,250 per Semester
- \$16,500 per year (Total = \$49,500)



The Business Degree focuses on providing a practical approach to education which aims to enhance the employability of students. To that end a key component is a Work Integrated Learning (WIL) placement where students get an opportunity to work within a business or other type of organisation so that they can make use of the knowledge they have acquired in class, to real world circumstances.



**Dr. Malcolm Abbott**

Dean, Higher Education



# HIGHER EDUCATION

## ACCOUNTING PROFESSIONAL YEAR PROGRAM (APYP)



### INTAKE DATES (2021)

25 Jan / 22 Mar / 19 Apr / 17 May / 14 Jun / 12 Jul / 9 Aug /  
6 Sep / 4 Oct / 1 Nov

### CAMPUS

- Available in Perth and Adelaide

### COURSE DURATION

- 44 weeks
- 8 hours per week

### INTERSHIP

- 12 week Accounting internship

### STUDY MODES

- Face-to-face classroom-based learning

### COURSE ENTRY REQUIREMENTS

- Undertake a face-to-face pre-enrolment interview with the authorised Provider to ensure course suitability and viability
- Completed one or more Accounting related degrees as a result of at least two years full time study in Australia
  - The degree/s must be on the approved list of courses for international students (CRICOS)
  - Have completed the most recent degree within the past two years
- Have a current Academic or General IELTS score of 6.0 in each band, or the equivalent score from Pearsons, TOEFL iBT or Cambridge Advanced English (from the 1st of September 2020, evidence of English Language Test results must be provided at enrolment)
- Hold a 485 visa (or other appropriate visa) with a validity of at least 12 months
- Have a positive skills assessment from one of the Professional Accounting Bodies

### COST

- Tuition Fee: \$7,200 (Perth)
- Tuition Fee: \$5,800 (Adelaide)

## AUSTRALIAN COMPUTER SOCIETY PROFESSIONAL YEAR PROGRAM (ACS PYP)

### INTAKE DATES (2021)

17 May / 14 Jun / 12 Jul / 9 Aug / 6 Sep / 4 Oct / 1 Nov

### CAMPUS

- Available in Perth

### COURSE DURATION

- 44-52 weeks
- 8 hours per week

### INTERSHIP

- 12 week ICT internship

### STUDY MODES

- Face-to-face classroom-based learning

### COURSE ENTRY REQUIREMENTS

- Undertake an individual, documented pre-enrolment interview with Stanley College to ensure program suitability, shared internship expectations, and completion viability.
- Have successfully attained an ICT-related Bachelor or Master degree or higher from an Australian tertiary institution as a result of a minimum of two years' full-time study in Australia prior to commencing ACS PYP per the Australian Study Requirement (ASR)
- Hold a valid passport and visa that allows full work and study rights whilst undertaking the ACS PYP. Prospective applicants who already hold a valid visa are required to hold a minimum of 12 months' validity (365 days) on their visa from the date of ACS PYP commencement
- Hold a current English Language Test result undertaken within the three years immediately prior to the date of ACS PYP commencement and demonstrate an IELTS score of 6.0 in each band (Academic or General), with no band below a 6.0, or the equivalent score from Pearson, TOEFL iBT, Cambridge Advanced English or Occupational English Test

### COST

- Tuition Fee: \$11,000

Stanley College is an approved Accounting PYP provider and endorsed by the following:



Stanley College is an approved Australian Computer Society Professional Year Program provider.



A member of:



## INDUSTRY PARTNERS



**AustAsia Group**  
Business, Financial & Taxation Solutions



**PITCHER  
PARTNERS**



**Stantons International**  
Chartered Accountants and Consultants

**LJM & A**  
CHARTERED ACCOUNTANTS  
& BUSINESS ADVISORS

## PROFESSIONAL YEAR PROGRAMS



**More Industry  
Partners**



## SHORT COURSES

HLTAID003

### PROVIDE FIRST AID\*

CRICOS Course Code: 097582D



This course provides you with the techniques and skills to confidently administer emergency care and life support to the ill or injured, until medical aid arrives. Students also learn a range of practical skills, including casualty assessment, decision-making and basic life support, including Cardio-Pulmonary Resuscitation (CPR). Successful students receive a Statement of Attainment at the end of the course.

\*This unit of competency forms part of SIT20316 Certificate II in Hospitality.

**COST:** \$120 per person

**DURATION:** 3 days



SITHFAB002

### Provide Responsible Service of Alcohol (RSA)\*

CRICOS Course Code: 097582D



Responsible service of alcohol is an important part of the health and safety requirements in all WA hotels and licensed restaurants. Indeed, this Nationally-Recognised Unit of Competency is a legal requirement for anyone who is required to serve alcoholic beverages in WA. This unit provides you with the skills and knowledge to responsibly sell and serve alcohol, as required under the Liquor Control Act 1988 in WA. To recognise this competency, a Statement of Attainment is issued on successful completion of the unit.

\*This unit of competency forms part of SIT20316 Certificate II in Hospitality.

**COST:** \$120 per person

**DURATION:** 2 days

(Including theory and practical components.)



## WORKSHOPS

### BARISTA WORKSHOP



Our barista workshop gives participants all of the practical experience they need to be professional coffee makers. It is suitable for both beginners and active baristas - who need the fundamental skills for preparing all styles of great tasting coffee! A Certificate of Participation is issued at the end of the workshop.

**COST:** \$120 per person

**DURATION:** 1 day

This workshop is not a CRICOS registered course.



### COCKTAIL Workshop



Making cocktails is fun - and this workshop gives you all of the practical experience you need to be a professional cocktail maker. The workshop is also suitable for beginners who may require fundamental skills in preparing all styles of great tasting cocktails! All successful students receive a Certificate of Participation at the end of the workshop.

**COST:** \$150 per person

**DURATION:** 2 days

This workshop is not a CRICOS registered course.



OUR CAMPUSES



**PERTH CITY CAMPUS**  
171 James Street,  
Northbridge



**WEST PERTH CAMPUS**  
69 Outram Street,  
West Perth



**MIRRABOOKA CAMPUS**  
9 Chesterfield Road,  
Mirrabooka



FACILITIES	Perth City Campus (PCC)	West Perth Campus (WPC)	Mirrabooka Campus (MBC)
Classrooms	8 Classrooms	18 Classrooms	10 Classrooms
Student Lounge	✓	✓	✓
Computer Lab/WiFi	✓	✓	✓
Prayer Room	✓	✓	✓
Alfresco Area	✓	✓	-
Restaurant/Cafe	✓	✓	-
Commercial Kitchens	✓	-	-
Library	-	✓	-
Business Hub	-	✓	-
Health Ward	-	-	✓
Creche	-	-	✓

- Note:
- Stanley College provides free Wifi access for on-campus use.
  - Materials Fee include equipment and resources used during course delivery at Stanley College.







#### HEAD OFFICE

WEST PERTH CAMPUS (WPC)  
69 Outram Street, West Perth WA 6005

PERTH CITY CAMPUS (PCC)  
171 James Street, Perth, WA 6003

MIRRABOOKA CAMPUS (MBC)  
9 Chesterfield Road Mirrabooka WA 6061

PHONE: +61 8 6371 9999  
EMAIL: [info@stanleycollege.edu.au](mailto:info@stanleycollege.edu.au)  
WEBSITE: [www.stanleycollege.edu.au](http://www.stanleycollege.edu.au)

ADELAIDE CAMPUS  
Level 1, East 50, Grenfell Street, Zurich House, Adelaide SA 5000  
PHONE: +61 8 8120 4140  
EMAIL: [info@stanleycollege.edu.au](mailto:info@stanleycollege.edu.au)

#### REPRESENTATIVE OFFICE

PHILIPPINES  
ADDRESS: Unit 309-310 Executive Building Center,  
369 Sen Gil Puyat Ave., Brgy. Bel-Air Makati City, Philippines 1209  
MOBILE: +63 998 580 3355  
EMAIL: [marketing@stanleycollege.edu.au](mailto:marketing@stanleycollege.edu.au)



Stanley International College Pty Ltd Trading as Stanley College  
CRICOS PROVIDER CODE: 03047E  
RTO Code: 51973  
TEQSA Provider No: PRV14050  
ABN: 16 130 977 221



Find us on Facebook  
[facebook.com/St StanleyInternationalCollege](https://facebook.com/St StanleyInternationalCollege)



Follow us on Instagram  
[instagram.com/stanley\\_college](https://instagram.com/stanley_college)



Follow us on WeChat  
WeChat ID: 斯坦利学院 Stanley College



Follow us on YouTube  
[youtube.com/c/St StanleyCollegeRTO51973](https://youtube.com/c/St StanleyCollegeRTO51973)



Call us on Skype  
Perth, Western Australia, Skype: stanley.college

Philippines Skype: stanley.college.philippines  
Latin America Skype: stanley.college.brasil

Version: 1.5 April 2021

Every effort has been made to ensure that the information contained in this publication is correct as of 15 April 2021.

This information is subject to amendment without notice. Stanley College reserves the right to add, vary or discontinue, without notice, any unit or course and impose limitations on enrolment on any course, prior to enrolment. Please visit [www.stanleycollege.edu.au](http://www.stanleycollege.edu.au) for the latest updates.